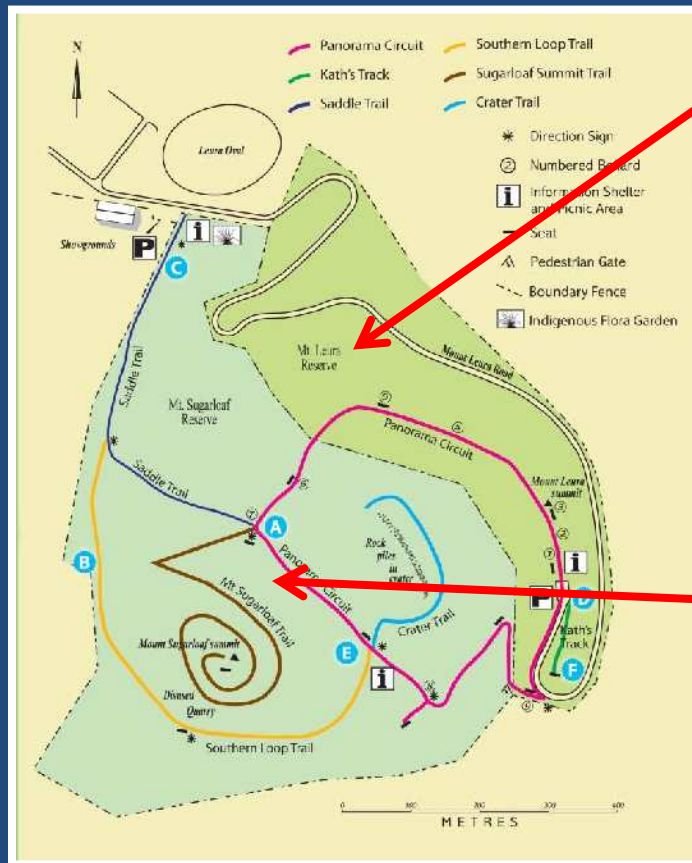
An aerial photograph of a landscape featuring two prominent hills. The hill in the foreground, Mt Sugarloaf, is covered in dense green forest. The hill in the background, Mt Leura, is mostly bare, showing its natural rock face. The surrounding area consists of green fields and scattered trees under a clear sky.

# **“The changing face of Mt Leura and Mt Sugarloaf – (Pre)1839 to 2020”**

**GRAHAM ARKINSTALL – Feb 2020**





## MT LEURA RESERVE

- **11.3 HECTARES** in area.
- A gift from Manifold family to Shire of Hampden in 1899.
- The Mount Leura Reserve title was passed on to Town of Camperdown Council in 1953 and then to **Corangamite Shire** in 1995.

## MOUNT SUGARLOAF RESERVE

- **38.8 HECTARES**
- Has been owned by the **National Trust (Victoria)** since 1972.
- Has leased the Reserve to Corangamite Council since 2003 for management purposes.

# Pre 1839



## 20 MILLION YEARS AGO: **Under the sea – as far north as Hamilton**

... with big sharks and lots of fish and shells.



Megalodon, the  
World's Deadliest  
Prehistoric Shark

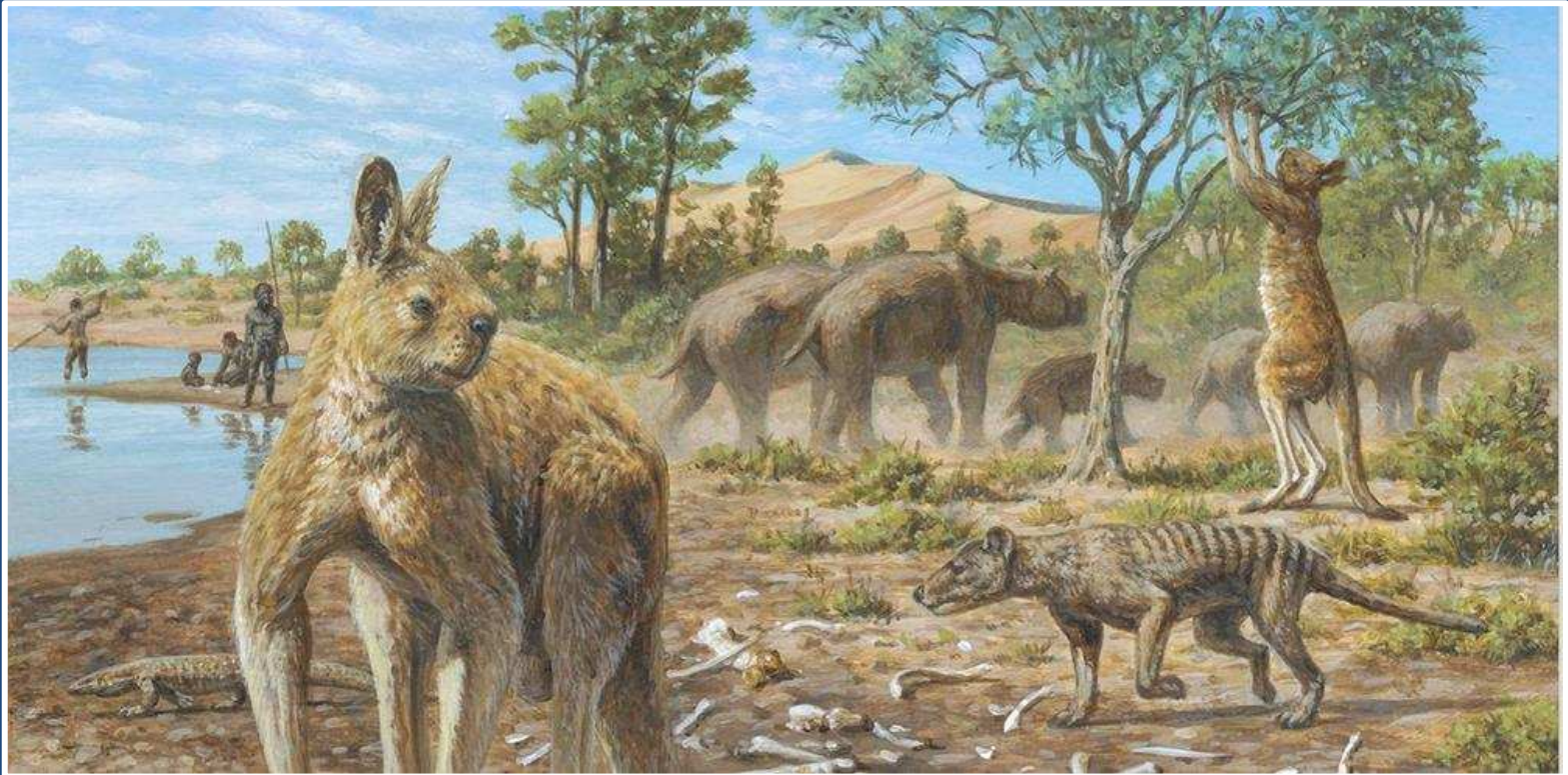
**NOT ONLY DID THIS ANCIENT  
LOCATION OF THE FUTURE  
SITE OF MT LEURA & MT  
SUGARLOAF LOOK VERY  
DIFFERENT, THE THICK  
LAYERS OF SEDIMENT LAYED  
DOWN ON THE OCEAN  
FLOOR WOULD HAVE A BIG  
IMPACT ON THE CREATION  
OF OUR CURRENT VOLCANIC  
FEATURE.**

**Part of Australia's biggest lava plain:**  
**2 – 4.5 MILLION YEARS AGO THERE WERE HUNDREDS**  
**OF VOLCANOES BETWEEN MELBOURNE AND**  
**PORTLAND ..... WITH VERY RUNNY LAVA.**



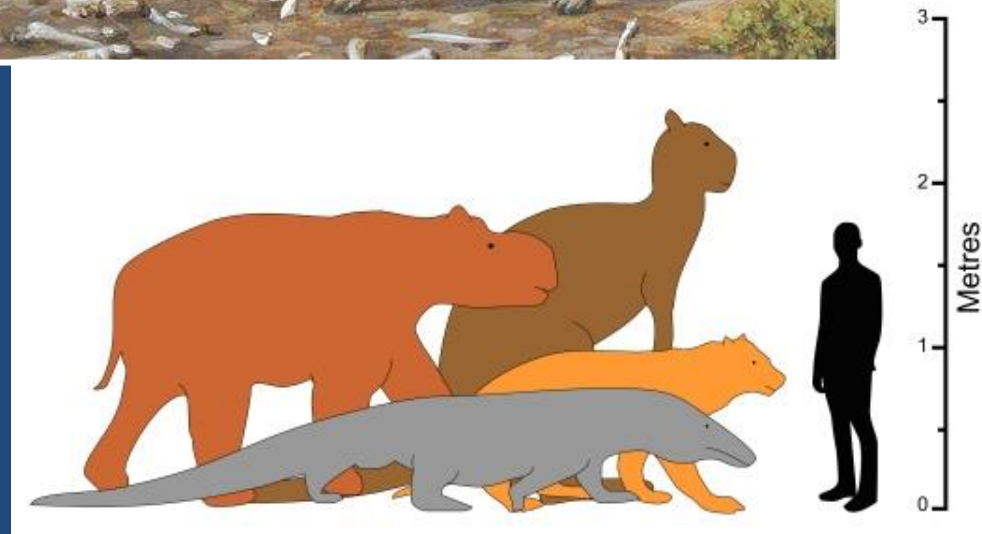


# 1 MILLION TO 30,000 YEARS AGO: Home to MEGAfauna



- GIANT WOMBATS (DIPROTODON)
- GIANT SHORT-FACED KANGAROOS (PROCOPTODON)
- MARSUPIAL LIONS (THYLACOLEO)
- GIANT “EMU” (GENYOROUS)
- TASSIE TIGER (THYLACINE)

GA/2020

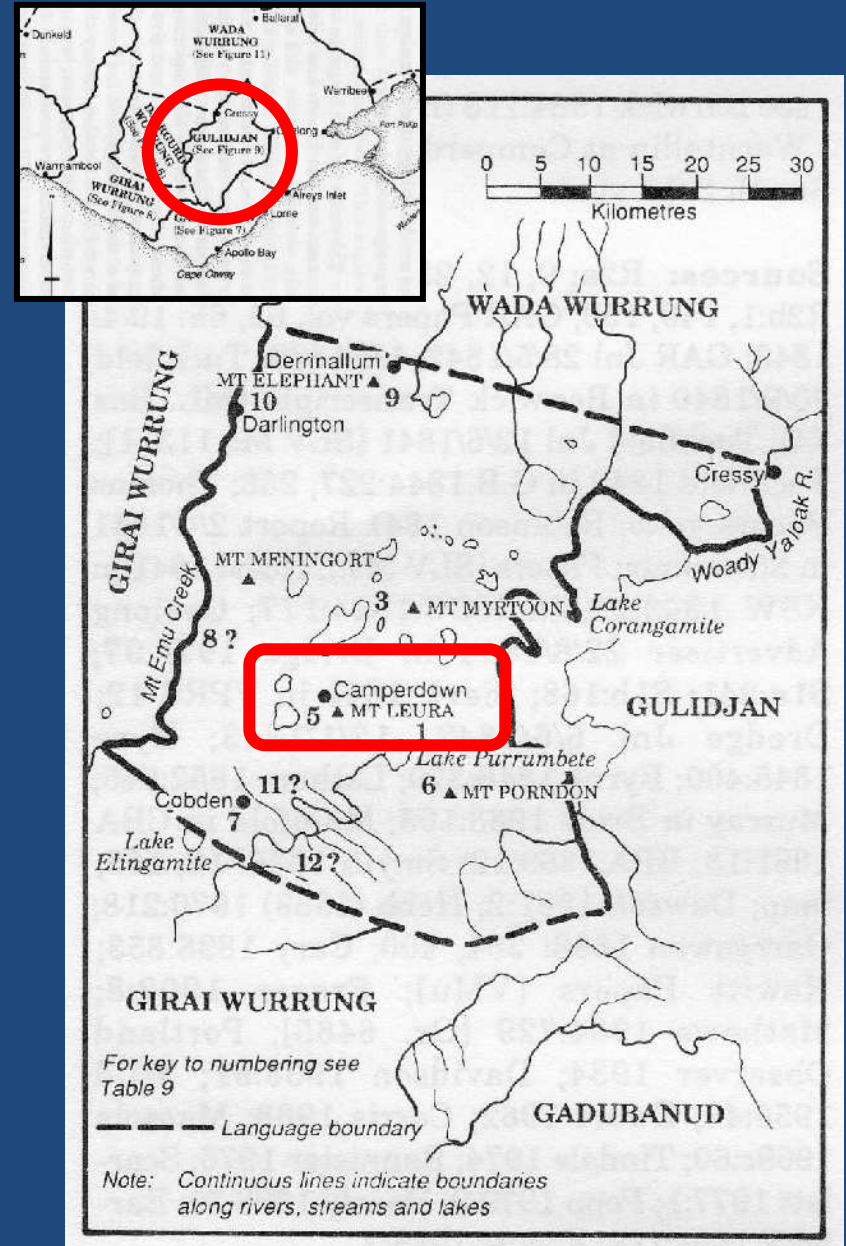


# Home to Aboriginal people: SINCE ABOUT 40,000 YEARS AGO

The Camperdown area was the  
territory of the  
*Liwura Gundidj* clan  
of the  
*Djargurd wurrung* people  
... the first people of  
Camperdown and district

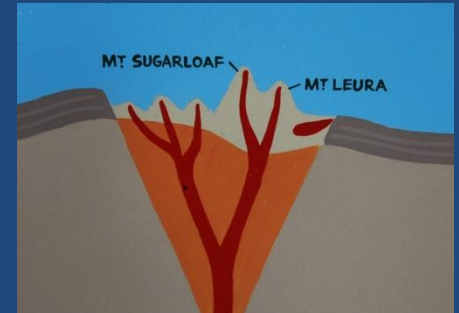
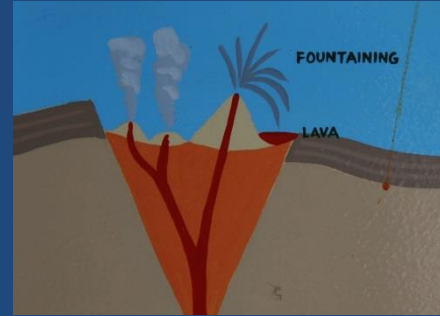


Photo of  
*Wombeetch*  
*Puyuun* -- died  
1883.  
(also known as  
Camperdown  
George)





# ABOUT 30,000 YEARS AGO: The Leura Maar ... and its many scoria cones including Mt Leura and Mt Sugarloaf.



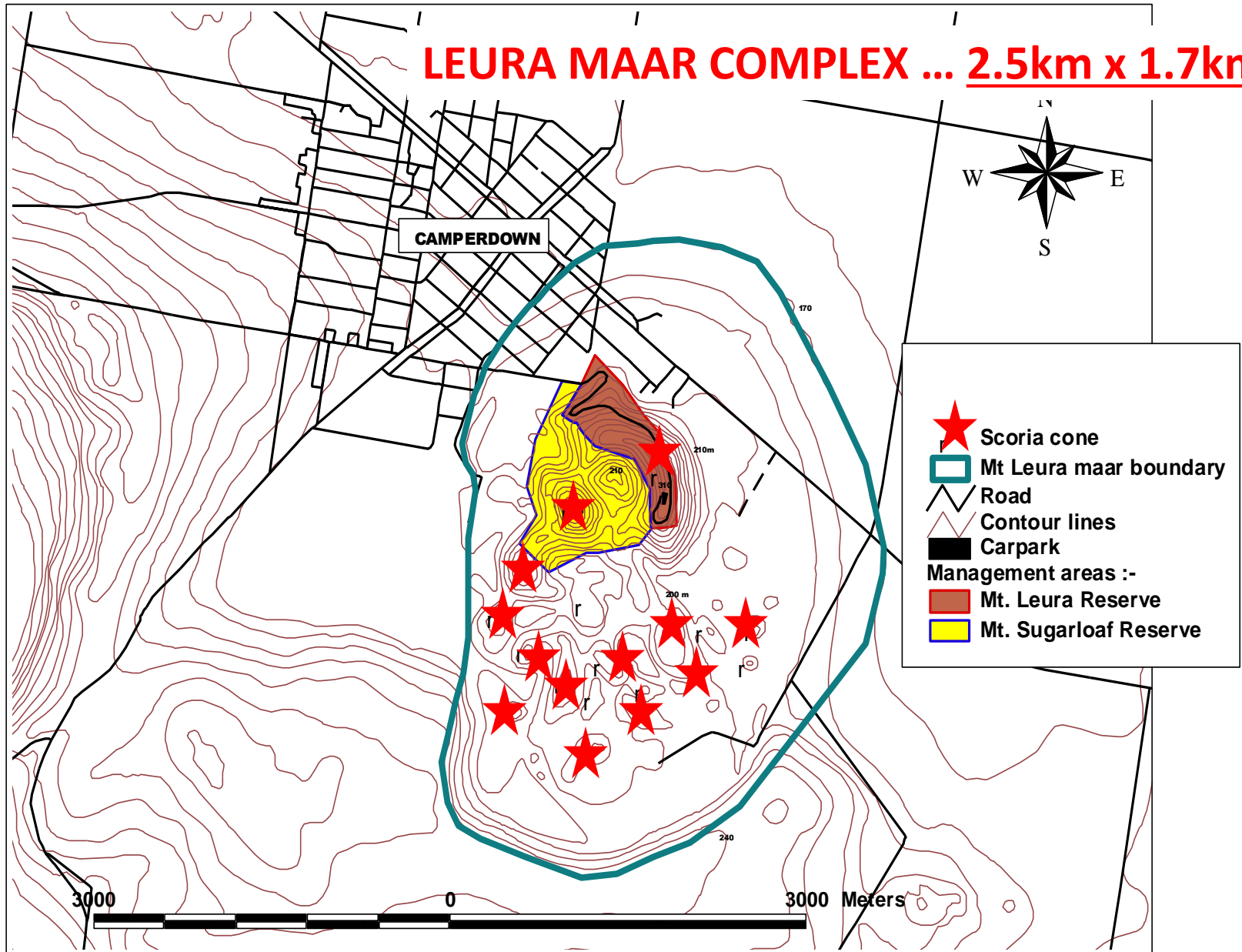
There are about 40 maar type volcanos between Colac and Port Fairy.

These volcanoes have very large craters, up to 2 km across, which are often filled with lakes e.g. Lake Purrumbete, Lake Gnotuk, Lake Bullen Merri and Tower Hill.





# LEURA MAAR COMPLEX ... 2.5km x 1.7km



# Post 1839



# Home to European settlers: 1830's TO NOW – SOME EARLY VISUAL RECORDS

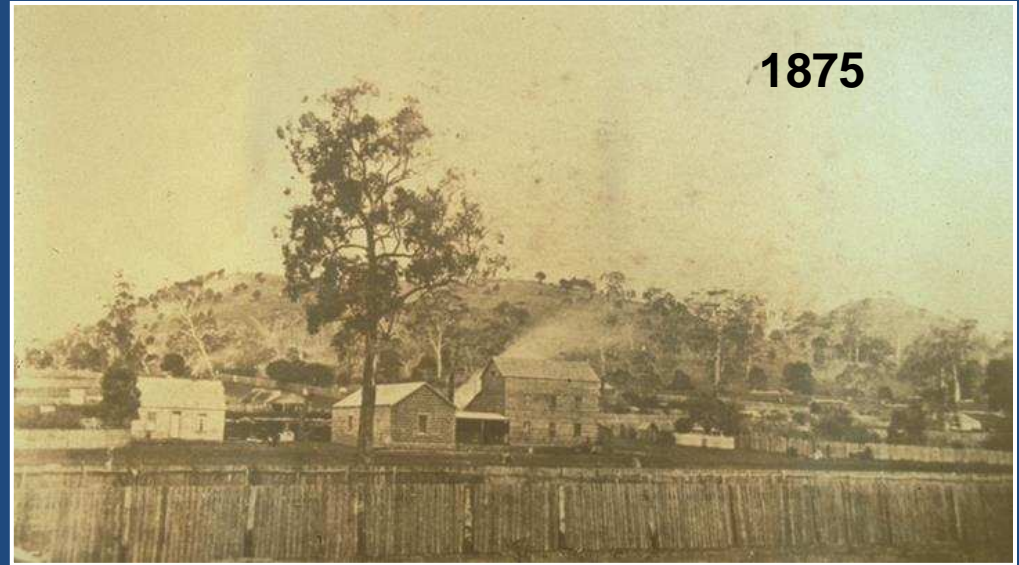


**Von GUERARD 1858**

# MORE EARLY VISUAL RECORDS



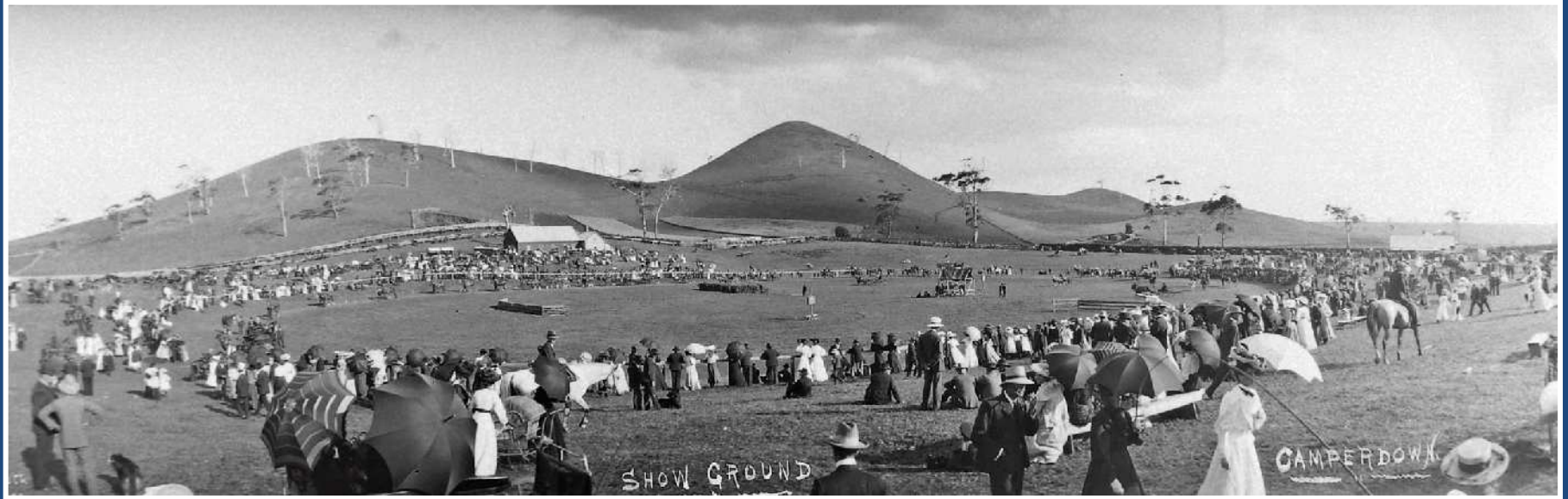
1870 – many indigenous trees





# MORE EARLY VISUAL RECORDS

1910



1938



1920's?

NOV 1970



7 OCT  
1966



**14 OCT  
1966**



**OCT 1970**



# 1989 ONWARDS

# EARLY CLEARING OF PINES and CYPRESS on the RESERVES

TO BE READ THIS MONTH

**Camperdown Chronicle**

INCORPORATING THE HAMPOIN GUARDIAN

TUESDAY, August 16, 1989

Registered by Australia Post — PUBLICATION NO. VAC 1437

**COURT SAYS "EVERYONE"**

The projected closure of the Camperdown Reserve for the government but everyone else is free to use it as they wish, the court has ruled yesterday.

A verdict from the Supreme Court in the case of the Camperdown Reserve, which was decided by the court in favour of the government, was handed down yesterday.

The court said that the government has the right to use the reserve for its own purposes, but that it must also allow the public to use it for recreation and other purposes.

The court also said that the government must take steps to ensure that the reserve is maintained in a state of good repair and that it is open to the public at all times.

**TREES CHOPPED FOR BEAUTIFICATION**

Camperdown Town Council is spending \$15,000 on Mount Leura as part of an ongoing beautification process.

Council decided to beautify the reserve by removing the old cypress and pine trees which were planted by the original owners of the reserve.

The council said that the removal of these trees was necessary to improve the appearance of the reserve and to make it more attractive to the public.

The council also said that it was planning to plant new trees to replace the ones that were removed.

Camperdown Mayor, Cr. Stan Lee (right) stands with parks and gardens superintendent, John Butler beside one of the huge trees from Mount Leura's summit. The trees were cut down as part of an ongoing beautification process at Camperdown.

AUG 1989

MAY 1990

FRIDAY, MAY 4, 1990

Registered by Australia Post — PUBLICATION NO. VAC 1437

**PINES DOWN**

MI Leura's controversial pine trees are down! After months of debate and protests to save the 230 pine trees which lined the crest of the mountain they have been felled over the past three days. Contractors, Greylands Sawmills of Cobden, were awarded the contract to remove the trees at the April meeting of the Town of Camperdown Council.

The pines were felled and carted away during this week. It is expected the clearing operations will be concluded by today or early next week. The contractors have been working closely with the Council in regards to access to the trees through private property. A restoration program will be set underway by the council to revegetate the mountain in native plants.

**INSIDE PAGES:**

**Mt Leura tree removal opposed**

Town of Camperdown council will be asked by one of its councillors to reconsider a decision to remove trees from the top of Mt Leura at its March meeting.

Councillor Lindsay Alexander said he could not see the point in totally removing over 230 trees for the sake of a view when alternatives could be considered. He said at least three attempts should be made to save the trees.

At a recent council meeting, Cr. Alexander said he felt the trees were in their prime. As the trees were originally planted by the club should be kept and the trees should be kept as the trees look place. Cr. Alexander said.

My motto is to plant trees, not knock them down, he said.

In August last year council announced plans to spend \$15,000 on beautifying Mt Leura with a continuing

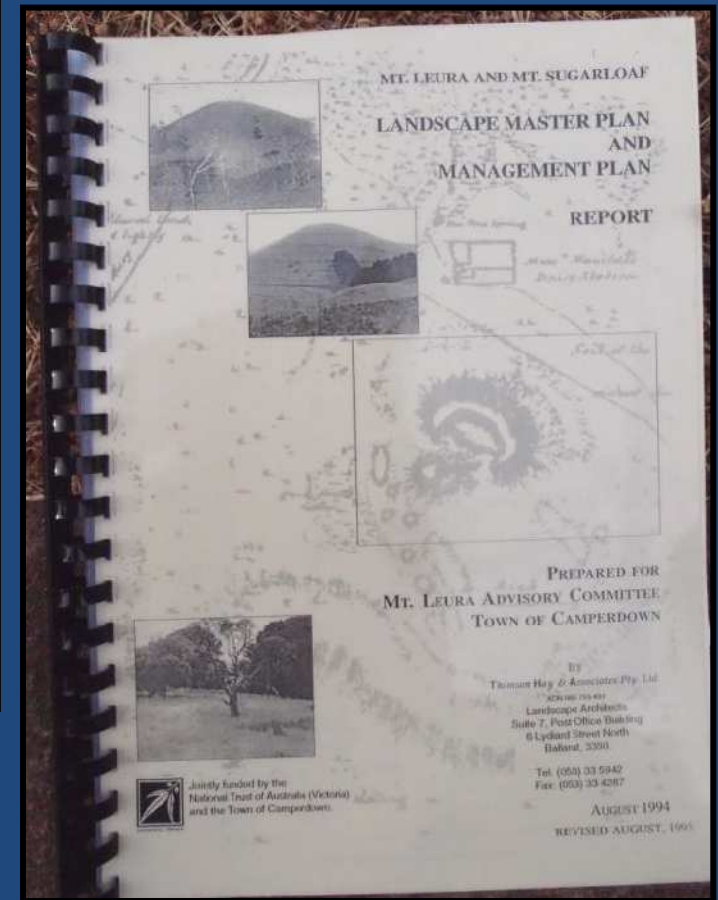
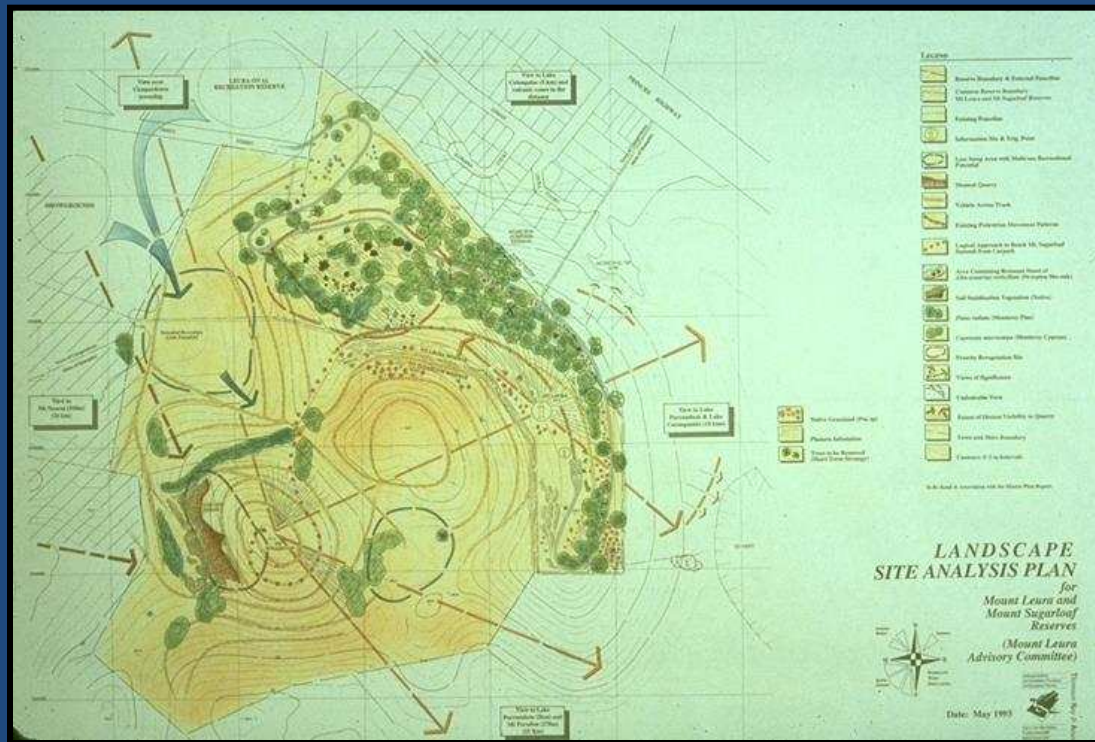
program over several years. Cr. Alexander said permission had been sought from the State Planning Board to plant 2000 trees to replace the ones that were removed. He said for the trees to be removed, the council must first be given a view from the car park into the crater.

Mr. Small said a number of the trees, which were old and dying, had to be removed. A spokesperson for the Leura and Orford Environment Group said the group was not opposed to the removal of the trees, but that they should be replaced with native plants.

Very good documentation, photographs and paintings from the early settlement period will be used to help the council and environment group to restore the mountain to its original state.

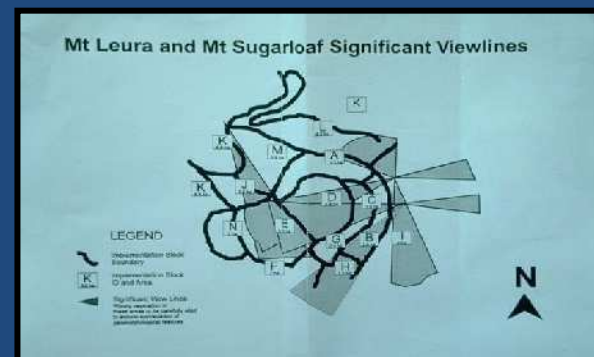
It is a shame that the two mountains, Mt Leura and Mt

Mr Bilby (Dept C,F&L recommended indigenous flora be planted on the reserve to replace the pines and cypress.



**PLANNING:  
1991- 1994**

**MT LEURA ADVISORY  
COMMITTEE**





# PROJECT MANAGEMENT SINCE JANUARY 1995

CORANGAMITE SHIRE



NATIONAL TRUST  
(VICTORIA)



7 x COMMITTEE MEMBERS:

- 6 x VOLUNTARY COMMUNITY MEMBERS
- 1 x C S MEMBER

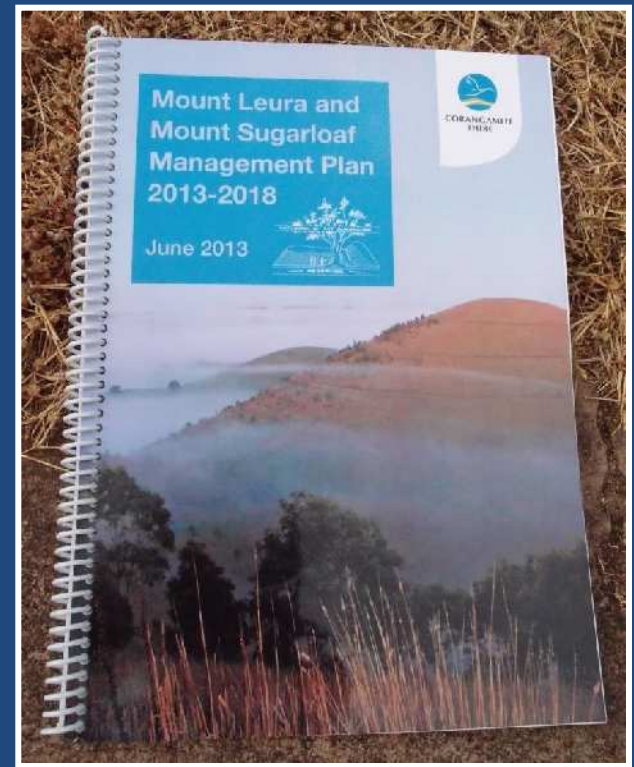
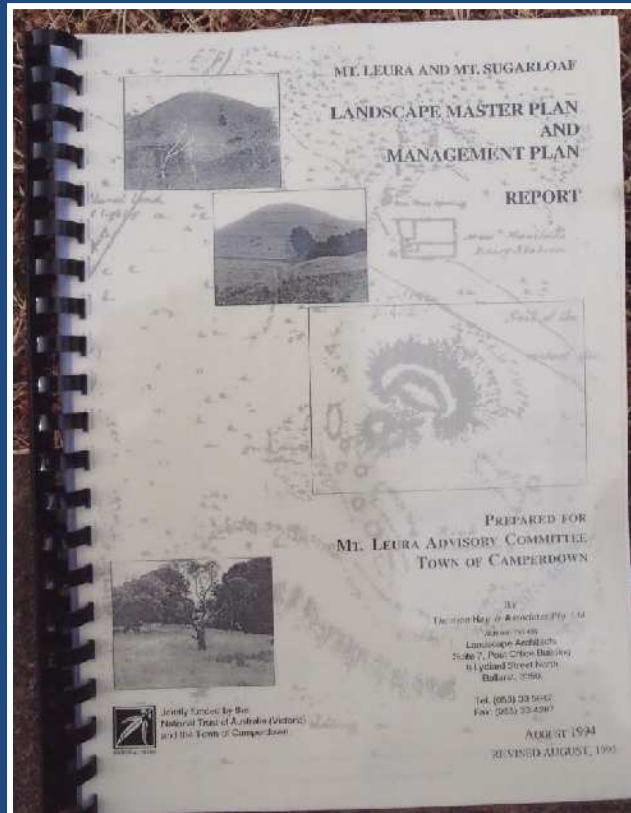
1 x PART TIME PROJECT OFFICER  
(SINCE 1998)



## KEY TASKS:

- IMPLEMENT MANAGEMENT PLAN
- SEEK FUNDING
- CRITICAL

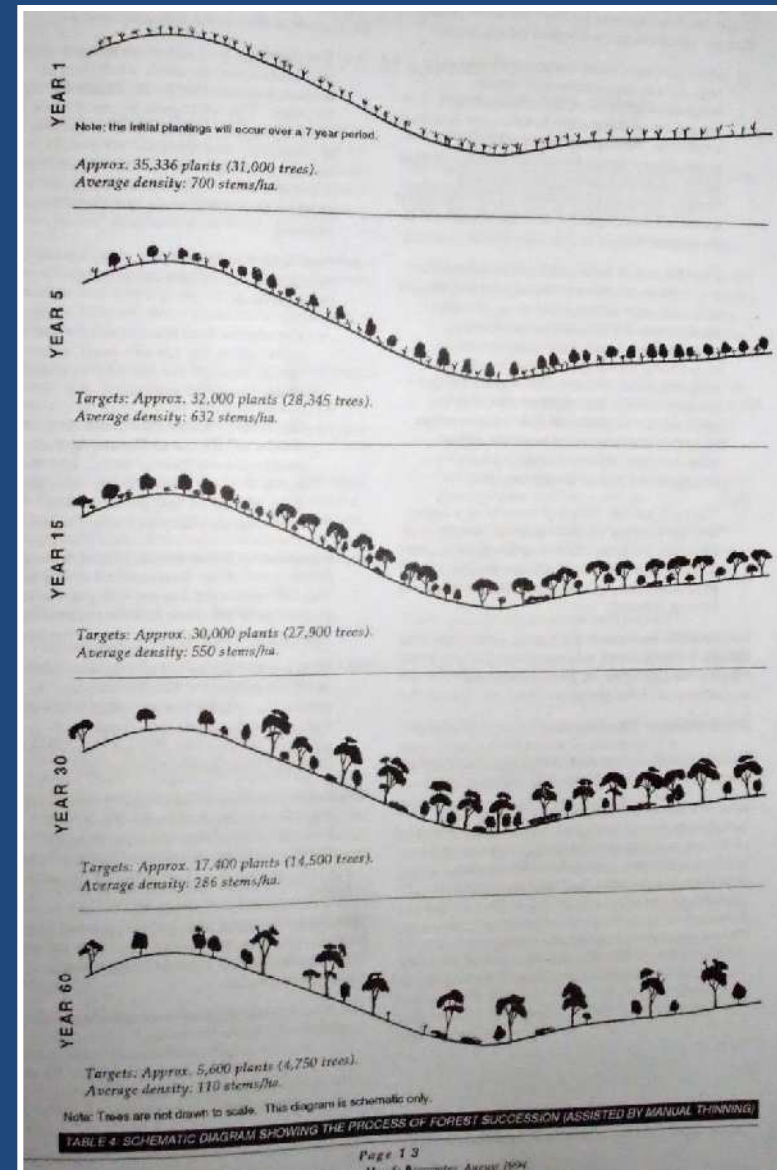
**1994: 'ENHANCE THE VISUAL,  
RECREATIONAL, EDUCATIONAL,  
CULTURAL AND ENVIRONMENTAL  
QUALITIES OF THE RESERVES  
THROUGH SENSITIVE  
REVEGETATION AND THE  
PROVISION OF APPROPRIATE  
FACILITIES.'**



**2013: 'THE MT LEURA AND  
MT SUGARLOAF RESERVES ARE  
AN ENVIRONMENTAL AND  
GEOLOGICAL ASSET, A PLACE FOR  
DIVERSE RECREATIONAL AND  
EDUCATIONAL ACTIVITIES, AND A  
REGIONAL TOURIST DESTINATION  
WHERE PEOPLE CAN RECONNECT  
WITH NATURE IN A SAFE AND  
SCENIC ENVIRONMENT.'**

# PLANTING GUIDELINES INCLUDED:

SPECIES TO BE PLANTED.	"REVISED" (1995) PLANS.		
TREES & SHRUBS :-	NOS. TO BE PLANTED.	NOS. AT MATURITY	
Drooping She-Oak ( <i>Allocasuarina verticillata</i> )	13507	1973	
Manna Gum ( <i>Eucalyptus viminalis</i> )	7995	1449	
Blackwood ( <i>Acacia melanoxylon</i> )	8142	1274	
Swamp Gum ( <i>Eucalyptus ovata</i> )	2573	372	
Silver Banksia ( <i>Banksia marginata</i> )	1065	295	
Sweet Bursaria ( <i>Bursaria spinosa</i> )	1027	278	
Prickly Moses ( <i>Acacia verticillata</i> )	546	248	
Hop Wattle ( <i>Acacia stricta</i> )	374	171	
Tree Violet ( <i>Hymenanthera dentata</i> )		n.a.	
<b>Total Numbers</b>	35230(approx.)	6000 (approx.)	
NATIVE GRASSES :-	Encouraged, but not as a primary planting. Understory seen as a long term goal.		
Tussock Grass ( <i>Poa</i> spp.)			
Wallaby Grass ( <i>Danthonia</i> spp.)			



**‘SUCCESSION’ ...  
What and Why?**





## NURSERY WORK







**COMMUNITY  
PLANTING –  
1995 onwards**





1995



## PINE and CYPRESS REMOVAL



2005



2005

GA/2020



# CHANGE OVER TIME

1995

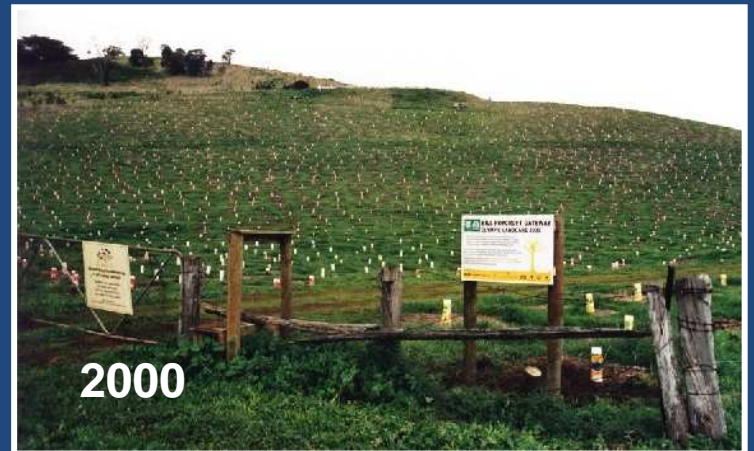


**MT LEURA and CRATER**



2019



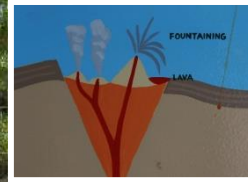


## LOWER SHELTER AREA – PART 1





## LOWER SHELTER PART 2



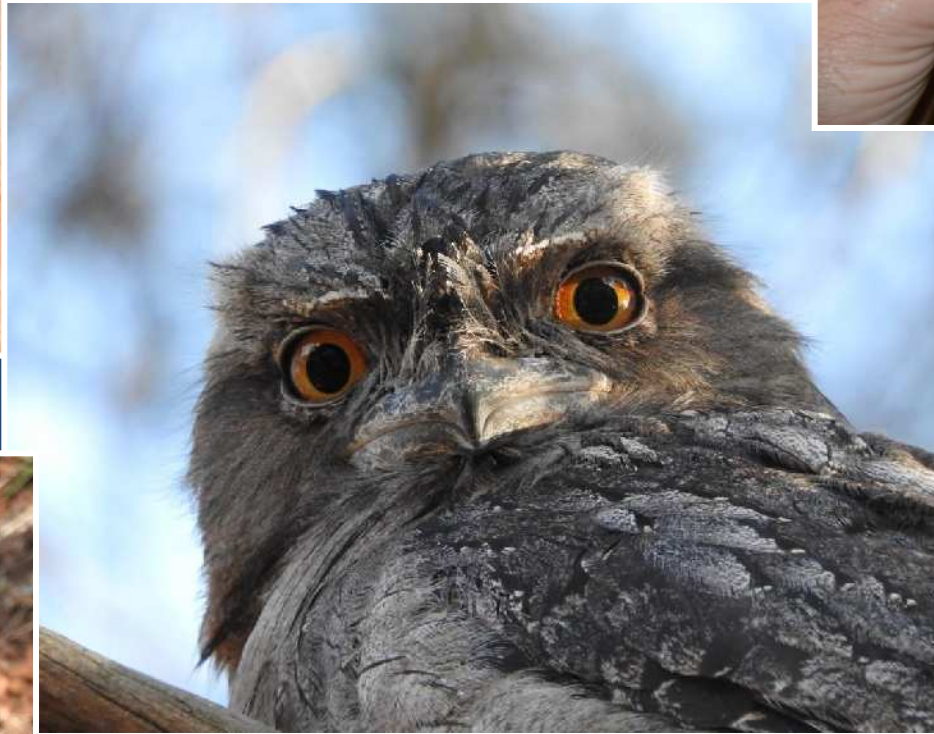
GA/2020







## OUR FAUNA



GA/2020





# FACILITIES

## Mt. Leura - Mt. Sugarloaf Reserves CAMPERDOWN Walking Trail Network



GA/2020





# VISITORS, USERS AND OTHER RESERVE ACTIVITIES

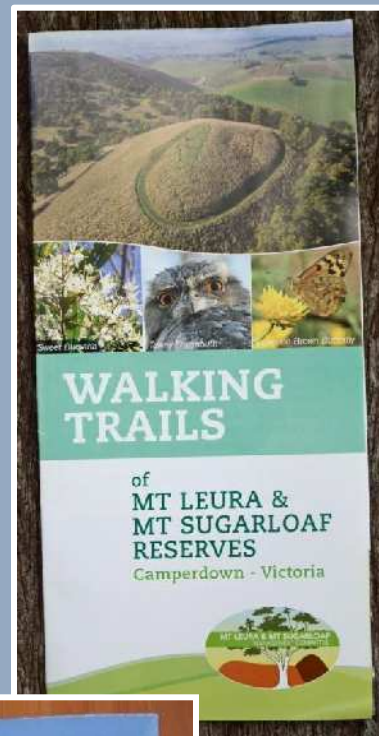
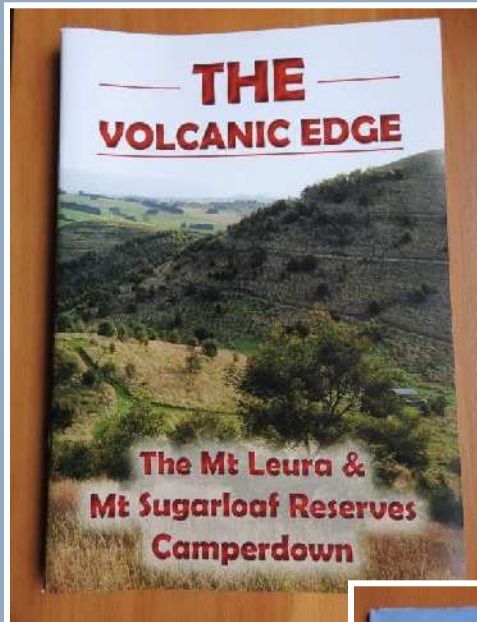


GA/2020



# PROMOTION

- [www.mtleura.org.au](http://www.mtleura.org.au)
- FACEBOOK
- INSTAGRAM

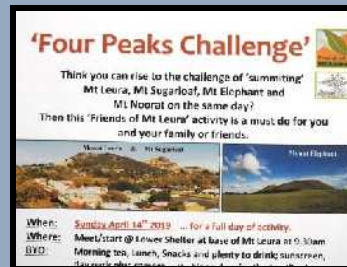


**FRIENDS OF MT LEURA INC.**  
... IN PARTNERSHIP WITH THE MT LEURA & MT SUGARLOAF MANAGEMENT COMMITTEE.

**ACTIVITIES CALENDAR FOR 2019**

MONTH / DATE	PROPOSED ACTIVITIES	EXTRA DETAIL
JANUARY Sunday 20	Lower Shelter Indigenous Garden Working Bee	Mt Leura VEC*: 9.30am - 11.00am
FEBRUARY Sunday 17	Plant Propagation Workshop #1	Camperdown College Nursery 10.30am - 12noon plus free BBQ

\*Tuesdays 11am - 12noon



# **KEY FINANCIAL SUCCESSES AND ACHIEVEMENTS**

## **Additional Funding - Value Adding to Council Funds.**

### **Funding sourced by the Committee:**

- Successful grant applications from local, regional, state and federal sources have attracted a total of approximately **\$310,000 over the past 21 years.**

### **Funding sourced by OTHER groups:**

- The Committee has also received an **estimated \$35,000 in additional financial support** from other community groups in the area such as Camperdown Rotary Inc., Lakes and Craters Environment Group and the Friends of Mt Leura Inc.

### **In-kind contribution to the project by committee members and other volunteers:**

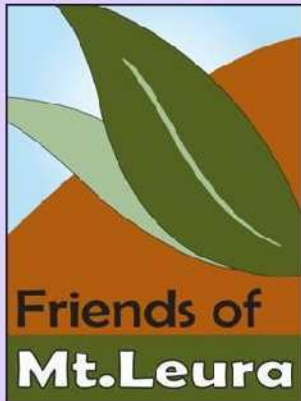
- **Since records began in 2002,** approximately **30,600 volunteer hours** have been contributed – an average of about 1,800 volunteer hours per annum. In dollar terms, calculated at \$25 per hour, **this amounts to over \$765,000 in just the years up to 2018.** ***This also clearly represents an enormous financial contribution (and saving) by the Committee to Council.***

**Details as provided to CS Councillors – May 2018**



Town of  
Camperdown

## MT LEURA ADVISORY COMMITTEE



Corangamite CMA  
Camperdown Rotary Club  
Camperdown Lions Club  
Scouts  
Local Residents  
Other schools  
Etc, etc.







**TO BE  
CONTINUED .....**



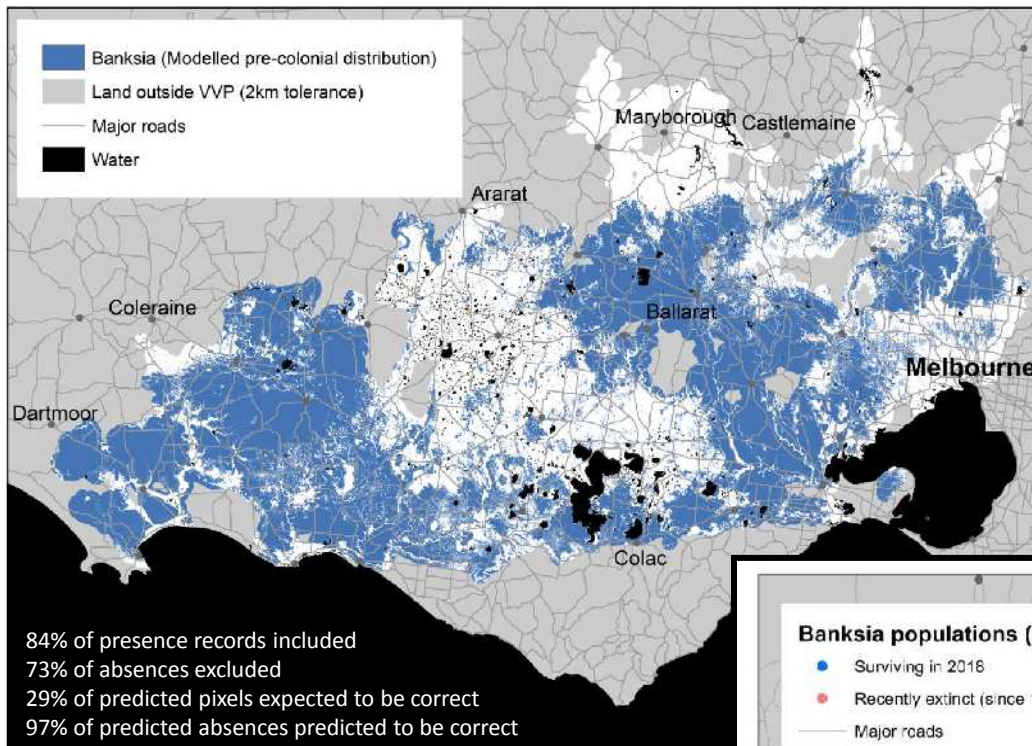


## A SPECIAL MENTION

*“the sides  
are clothed  
in fragrant  
banksias”*

quote ‘From a  
Western Hill-Top’

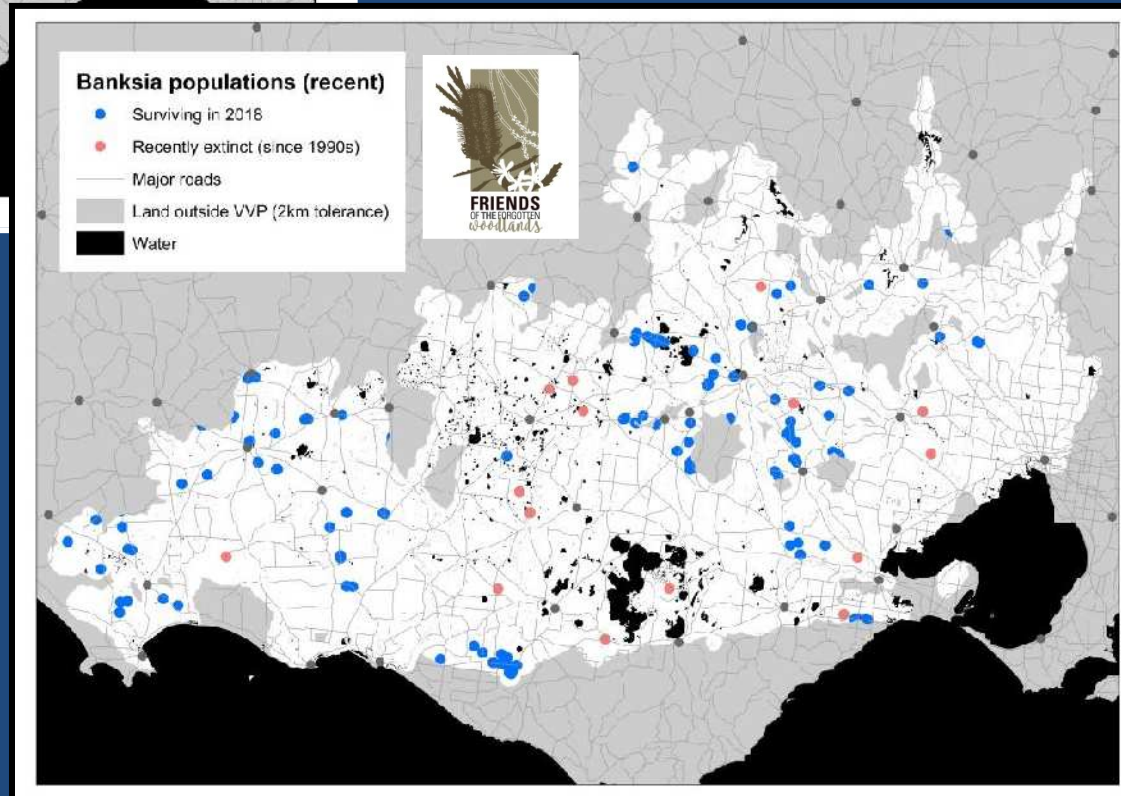




## Maps showing Pre-Colonial and Current distribution of *Banksia marginata* across the VVP

Howitt (1855, volcanic plains near Melbourne)  
*"... a wood of Banksia trees, which, as well as shiock, particularly affect volcanic soil,"*

Patton (1935, on the volcanic plains)  
*"The Proteaceae are wholly absent about Melbourne, but further away Banksia marginata occasionally occurs."*





Camperdown Chronicle  
Feb. 97.



DNR officer Andrew McLennan and Camperdown College student Nadia Lieblich playing their part in the rescue of the Silver Banksia tree.



GA/2020



**REMNANT  
BANKSIA  
and  
MT LEURA**



# HABITAT and SEED PRODUCTION PLANTINGS



GA/2020

2008



2018





**TO BE  
CONTINUED .....**



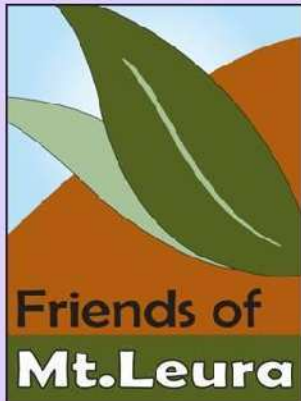








# Town of Camperdown



Department of  
Environment and  
Primary Industries

Corangamite CMA  
Camperdown Rotary Club  
Camperdown Lions Club  
Scouts  
Local Residents  
Other schools  
Etc, etc.





**Honeysuckle**, which the Banksia was also known as, has diminished greatly across the entire VVP as indicated by the following historical quotes:

Howitt (1855, volcanic plains near Melbourne)

*“... a wood of Banksia trees, which, as well as shiock, particularly affect volcanic soil,”*

*But only 80 years later* .....

Patton (1935, on the volcanic plains)

*“The Proteaceae are wholly absent about Melbourne, but further away Banksia marginata occasionally occurs”.*

1995





# Home to European settlers: 1830's TO NOW (THE LAST 180 YEARS)



1870 – many indigenous trees



1920's – no indigenous trees

Camperdown's  
last aboriginal,  
Wombeetch  
Puyun  
(also known as  
Camperdown  
George)  
dies in 1883.



2000 – replanting  
indigenous trees



2019 – many  
indigenous trees  
again ... great for  
koalas and other  
wildlife!!

